

BAFFLE BEAM

☐ Baffle Beam - Photo



☐ Baffle Beam Data

BAFFLE PROFILES: Standard Widths are 1"; 1-1/4"; 1-1/2"; 2"; 3"; and 4". Standard Depths are 6"; 8"; 10"; and 12". Standard length is 12'. Others are available.

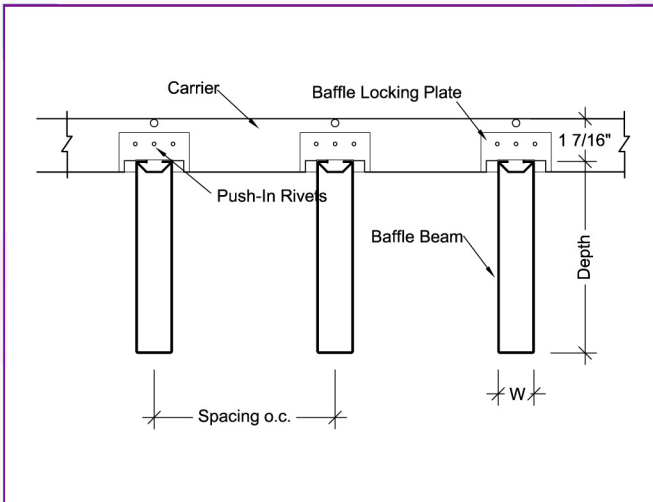
FINISHES: Standard metal are White, Satin Silver, or Gun Metal. Custom Painted are polyurethane epoxy. Premo Wood Laminate are Maple, Cherry, and Walnut.

FIRE CODE: Panel is Class 1 Material per ASTM-E84. Seismic T-Bar Suspension available upon request.

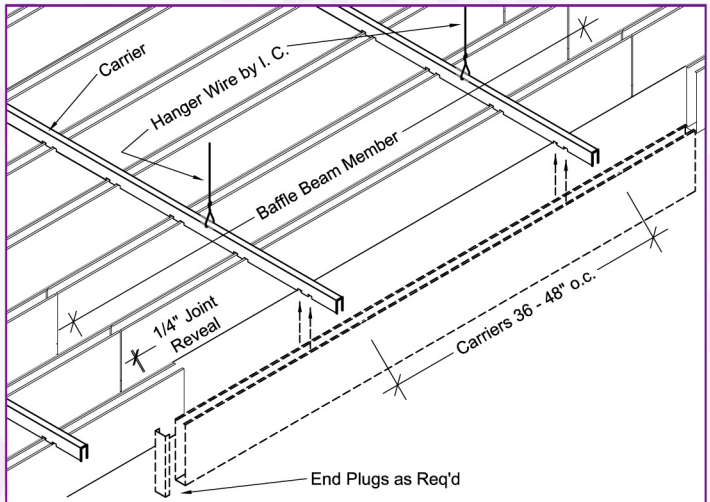
MATERIAL: Baffle Beam: Std. Duty is 0.025" alumin. Heavy Duty from 0.032" to .063" thk. aluminum Standard Carrier: .040" thk. aluminum.

LEEDs: Upto 90% for aluminum pans & Carrier.

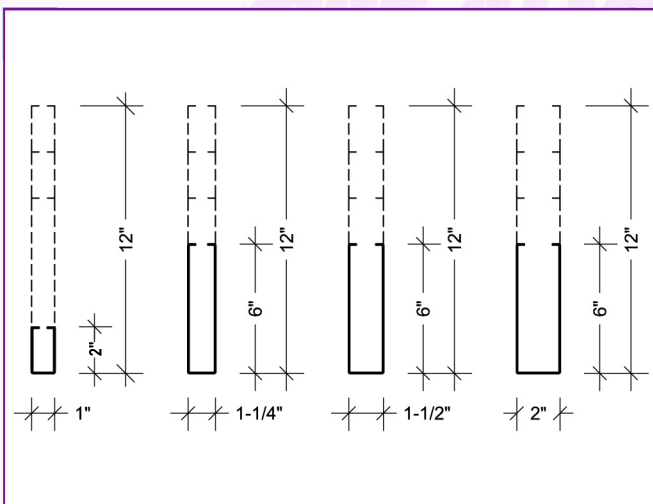
☐ Section - Typical



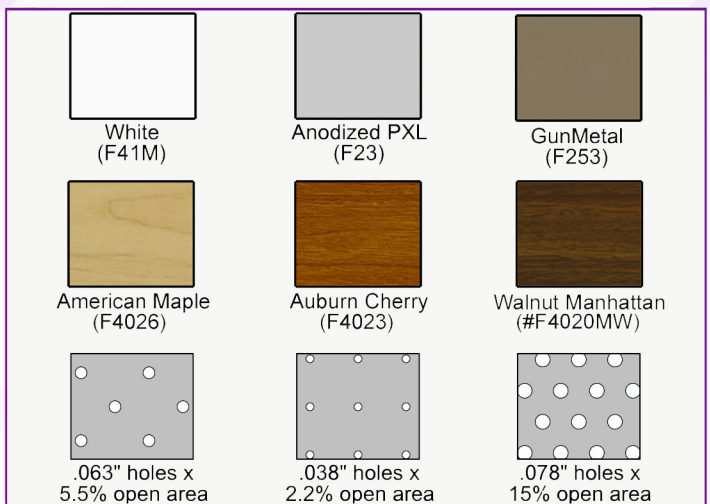
☐ Installation



☐ Standard Profiles



☐ Standard Finish/ Perf



**AMERICAN DECORATIVE
CEILINGS & WALLS**

(ALL RIGHTS RESERVED)

LBB CS PG1.PDF

Mail: Post Office Box 605605 - Cleveland, Ohio 44105
 Packages: 4510 East 71st St. - Cleveland, Ohio 44105
 Telephone: (216) 341-2222 - Fax: (800) 336-8501
 email: info@amer-dec.com

MLS1