

# EMBOSSED METAL

## Introduction

EMBOSSED METAL is a decorative ceiling reminiscent of late 19th century decor. It is rich in tradition and appearance.

## Technical

### PAN SIZES:

Standard are 2' x 2' (lay-in), 2' x 4' (nail-up)

### FINISHES:

Mill is no finish (finish #F00)

Primed is acrylic base (#FPR)

White is polyester roll coated (#F41)

Custom are polyurethane epoxy (#F47)

Mirrored: polished silver (#F03)

polished gold (#F07)

polished copper (#F06)

### PLENUM: (for lay-in)

4" recommended w/o HVAC or lights

12" recommended w/HVAC or lights

### FIRE CODE:

Non-combustible

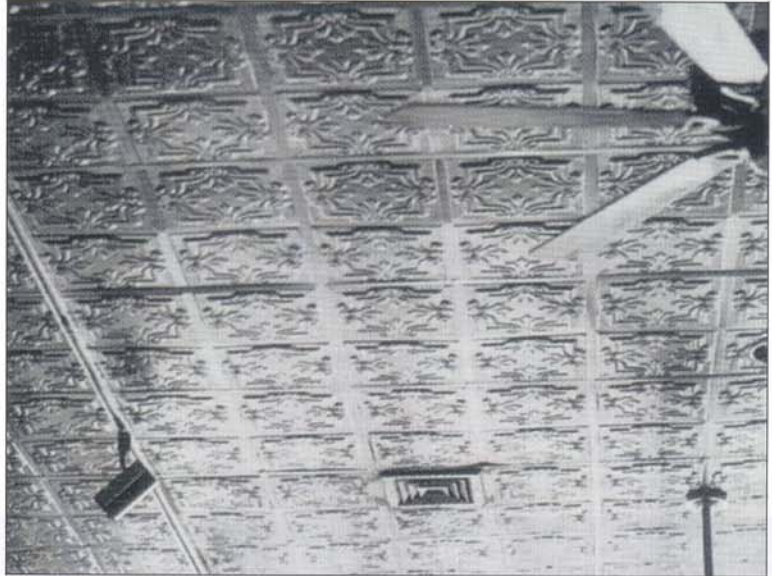
Fire rated suspension available.

### MATERIAL:

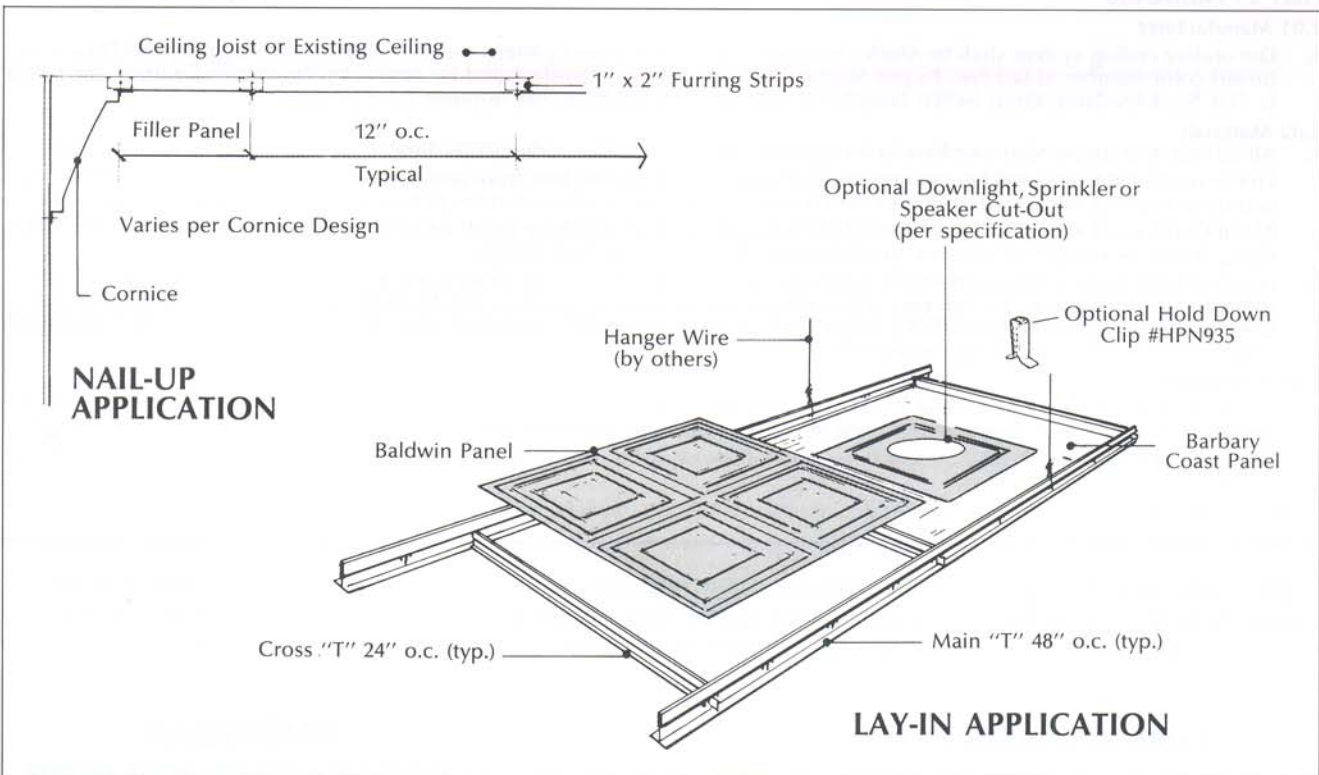
0.010" thick tin plated steel (.5#/sf)

0.020" thick aluminum (.3#/sf)

## Photo



## Installation



AMERICAN DECORATIVE CEILINGS

(All Rights Reserved)

4158 E. 71 ST. • Cleveland, Ohio 44105

Telephone: (216) 341-2222

FAX: (216) 341-8501