

# DEEP CELL 500

Photo



Technical

**PANEL SIZES:**  
Standard is 2'x2'  
Optional are 2'x4' to 4'x4'

**FINISHES:**  
Standard are polyester roll coated. (#FSTD)  
Custom painted are polyurethane epoxy (#F47)  
Mirrored are polished brite (#F28- Mirror Silver)  
(#F27- Mirroe Gold)

**PLENUM:**  
12" recommended minimum

**FIRE CODE:**  
Non-combustible. Fire rated grid available.

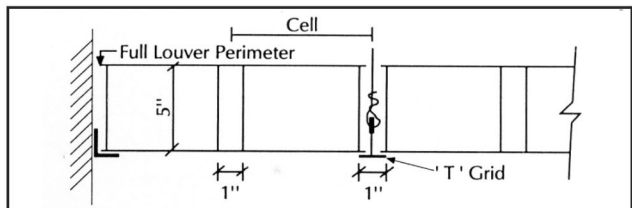
**MATERIAL:**  
Louver: 0.024" thick aluminum.  
'T'-Grid: 0.024" thick galvanized steel.  
(Contact factory for full Architectural specifications)

DC5 Data

MODEL NUMBER	CELL	WT./SQ. FT.	PANEL
DC560-2424-F41	6"	2.1 lbs.	2'X2'
DC580-2424-F41	8"	1.5 lbs.	2'x2'
DC512-2448-F41	12"	0.9lbs.	2'x4'
DC524-2424-F41	24"	0.6 lbs.	2'x2'

Other sizes available

Section



Installation

