

# TUNNELITE

## □ Introduction

TUNNELITE is reminiscent of one of the most popular Architectural elements of design...the Barrel Vault. True to this design, TUNNELITE helps create an open airy spacious feeling.

## □ Technical

### TUNNELITE SECTION:

1"x1" beams

### TUNNELITE MODULES:

See Tunnelite Data next page

### FINISHES:

Standard black is polyester roll coated  
 Custom colors (F47) are polyurethane epoxy.  
 Mirrored are polished brite.

### PLENUM:

See Tunnelite Data next page.

### FIRE CODE:

Metal-non-combustible  
 Lense- flame spread: 25 or less  
 -smoke contributed: 50 or less

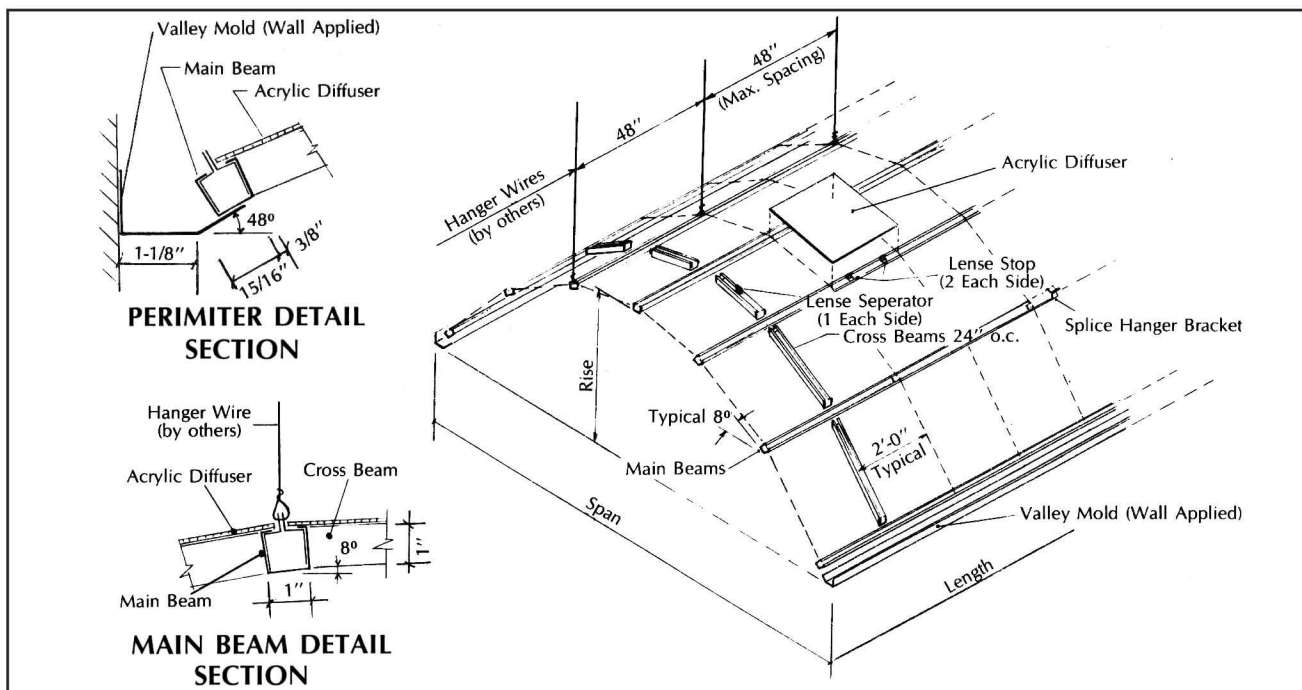
### MATERIAL:

Metal- 0.024" galvanized steel  
 Lense- 100% virgin acrylic

## □ Photo



## □ Installation



**AMERICAN DECORATIVE CEILINGS**

(All Rights Reserved)

Mail: Post Office Box 605605 - Cleveland, Ohio 44105

Packages: 4510 East 71st St. - Cleveland, Ohio 44105

Telephone: (216) 341-2222 • Fax: (216) 341-8501

email: [info@amer-dec.com](mailto:info@amer-dec.com)

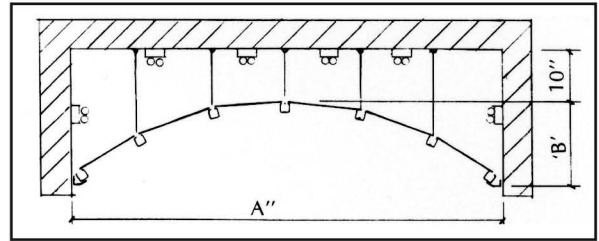
# TUNNELITE

## □ Tunnelite Data

Model Number	'A' Width	'B' Rise	Minimum Plenum	Weight per S.F.
LTL0812-F42	8'-0"	22"	32"	1.0
LTL1012-F42	10'-0"	27-3/8"	37-3/8"	1.0
LTL1212-F42	12'-0"	32-3/4"	42-3/4"	0.9

standard length is 12', longer units available in increments of 2'

## □ Section



## □ Specification

**PART 1- GENERAL** (See typical "General" section of "Typical Specification")

### PART 2- PRODUCTS

#### 2.01 Manufacturer

A. Illuminated ceiling system shall be "Tunnelite" model number LTL????-F42 (insert unit width at first two ?'s), (See Tunnelite Data for required size), (if finish is other than black insert appropriate number from section 2.02 H. below), as manufactured by American Decorative Ceilings, Inc.; 4510 E. 71st. St. Cleveland, Ohio 44105; (216)341-2222.

#### 2.02 Materials

- A. All suspension members to be constructed of the following:
1. Material: 24 Gage galvanized steel with zinc plating to inhibit rust.
  2. Finish: Two part polyurethane epoxy.
  3. Profile: 1"x1" beams as indicated on Installation Drawings.
  4. Edge Trim Profile: As indicated on Installation Drawings.
- B. Main Beams of standard lengths, with downward untapered vertical slots at all intersections with cross beams. Each intersection to be capable of allowing direct support to structure above if required.
- C. Cross beams of same profile as main beams. Cross beams to have tab ends for engagement into main slots of such design as to conceal all non decorative suspension elements.
- D. Main beam splice/hanger to be sized for 5 times design load indicated in ASTM C635, Table 1, Direct hung unless otherwise indicated.
- E. Acrylic diffusers to be manufactured from 100% virgin acrylic, with a maximum temper set of 25, and a roll stress relief of 5. Minimum thickness to be 0.080", color to be milk white, and sizes to be factory pre-cut.
- F. Perimeter valley mold to be sized per installation drawings, and of specified lengths of manufacturer. (Direct-Hung), will be less than yield.
- G. Lense Stops and lense separators to be provided by the manufacturer for ocaions per Installation Drawings. Said brackets to ensure the proper alignment of lenses with the metal suspension components.
- H. Finish to be (black (F42)), (white(F41)), (medium bronze(F44)), (custom color(F47)), (strike out all non-applicable finishes)

#### 2.03 Fabrication

- A. Fabrication of glazed acrylic diffusers and metal suspension system to be factory cut, mitred, and notched. All intersections are to be factory mitred for easy abutting joints. ONLY MINOR FIELD FABRICATION WILL BE ACCEPTED.
- B. Fasteners through-out shall be electroplated galvanized steel of proper design and strength to accomplish fastening purpose.

**PART 3-EXECUTION** (See typical "Execution" Section of "Typical Specification")

